



Ayrton Gould House
London, E2 0SD

£2,750 PCM


elms
ESTATES

Elms Estates are pleased to be able to offer to the market To Let this Three Bedroom Ground Floor Flat with a Private Rear Garden.

Ayrton Gould House is situated on Roman Road and offers excellent access to the Regents Canal and the Glorious Victoria Park that both offer Beautiful Open Spaces and Miles of Scenic Walks. This property really is set within the Heart of the East End with easy access to all of the Restaurants, Bars, Shops, Markets, Gyms, Parks, Galleries and Museums this Exciting Area has on offer. The property also benefits from excellent transport links, being within walking distance to Bethnal Green tube station as well as benefiting from multiple bus routes into the City.

Internally the property has been redecorated throughout and had new wooden flooring fittted to the hallway and one bedroom and the lounge and is spacious throughout with three good sized bedrooms, spacious lounge, separate kitchen and newly fitted shower room with separate W/C.

For more information or to arrange a viewing please do not hesitate to call in and speak with one of our Property Consultants.



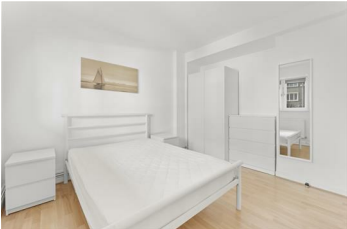
Kitchen 10'5" x 8'6" (3.20 x 2.60)



Lounge 13'5" x 12'5" (4.10 x 3.80)



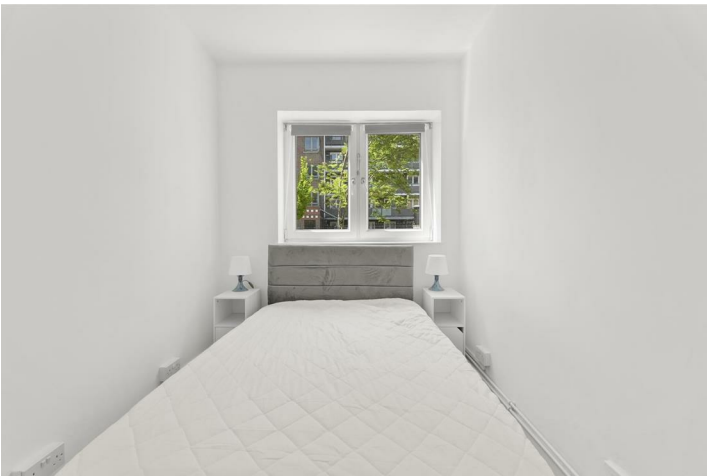
Bedroom One 12'5" x 9'10" (3.80 x 3.00)



Bedroom Two 11'5" x 9'10" (3.50 x 3.00)



Bedroom Three 9'10" x 6'10" (3.00 x 2.10)



Shower Room



W/C



Garden



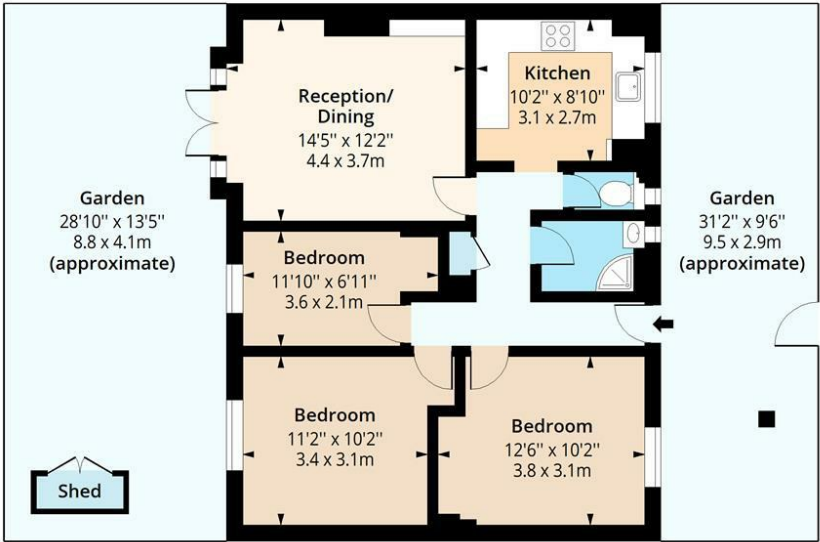
Material Information
Deposit: £3,173.07
Length Of Tenancy: One Year
Council Tax Band: C



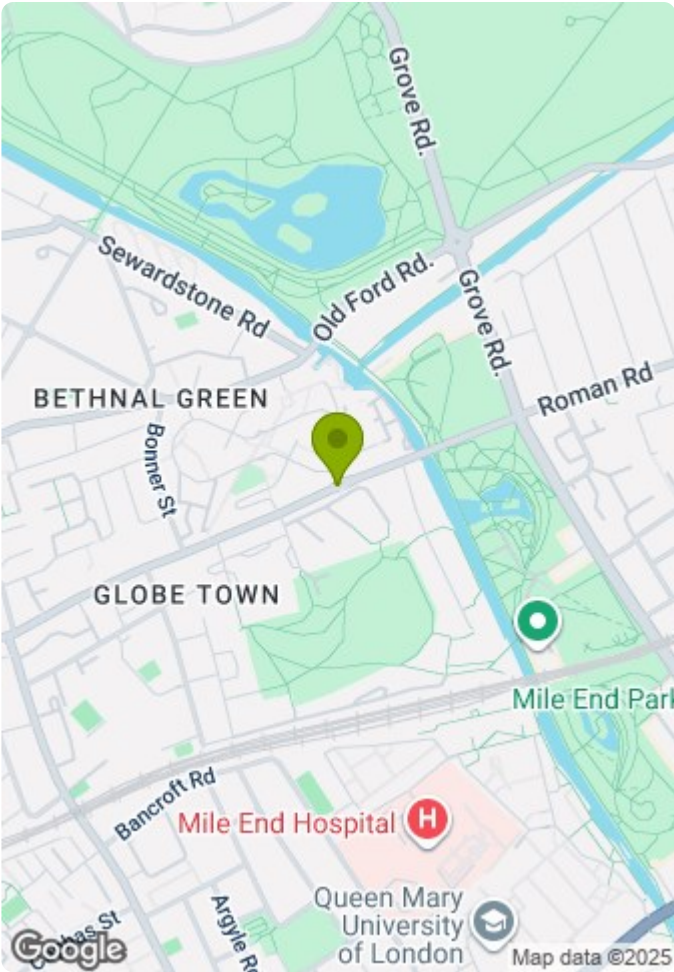


Ayrton Gould House, E2

Approx. Gross Internal Area 746 Sq Ft - 69.30 Sq M



Ground Floor
Floor Area 746 Sq Ft - 69.30 Sq M



Measured according to RICS IPMS2. Floor plan is for illustrative purposes only and is not to scale. Every attempt has been made to ensure the accuracy of the floor plan shown, however all measurements, fixtures, fittings and data shown are an approximate interpretation for illustrative purposes only. 1 sq m = 10.76 sq feet.

lpaplus.com

Date: 17/5/2025

